

PTTEP SIAM LTD.

Environmental Impact Assessment Report



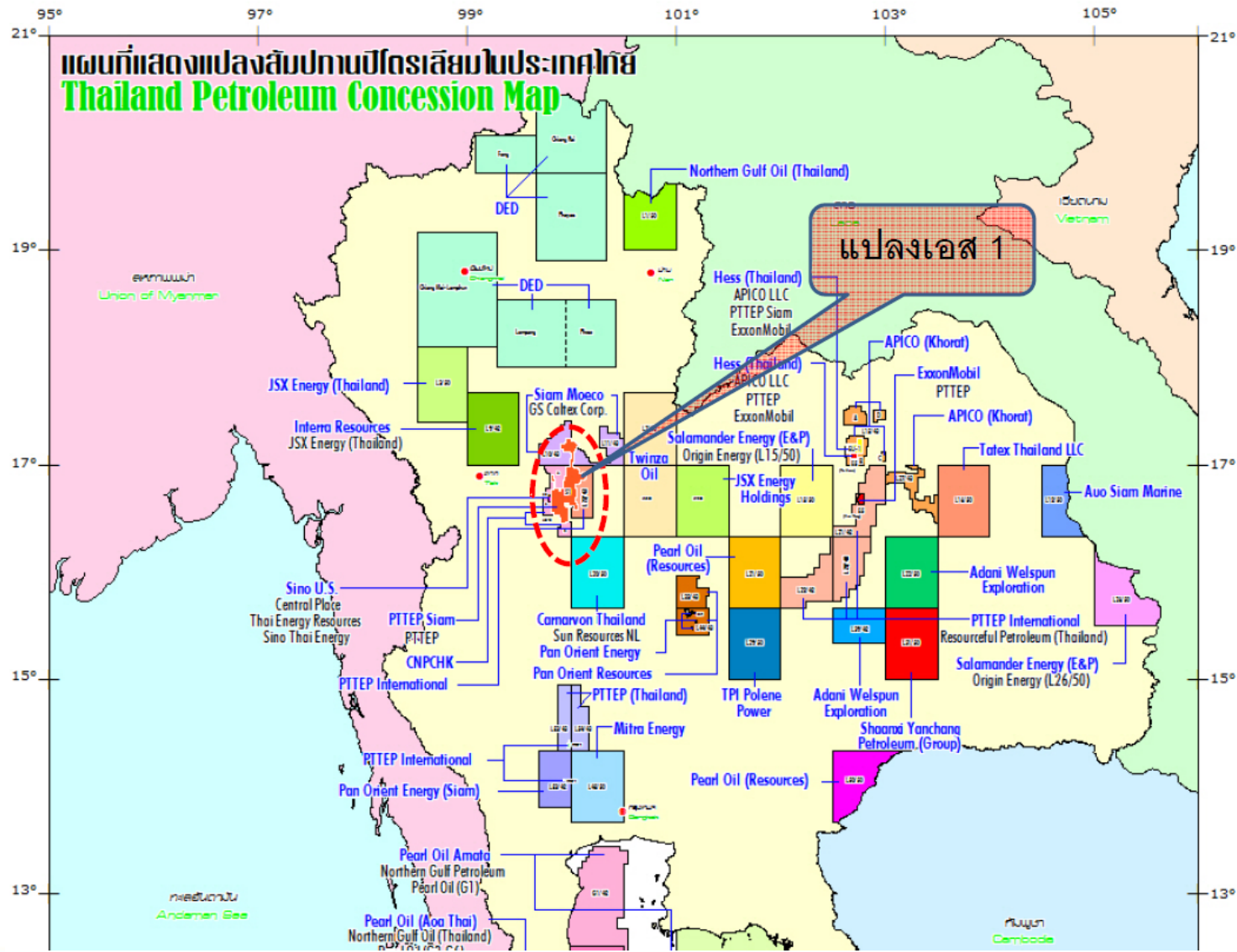
Onshore Petroleum Production of Pradu Tao, Sam Phaya
and Wat Mae in Block S1

Introduction



- PTTEPS, a concessionaire in Block S1, has an obligation to develop Thailand's energy resources to support the increasing of energy consumption.
- In 2013, PTTEPS is planning to develop wells in Pradu Tao and Sao Tien field. The project is called "Onshore Petroleum Production of Pradu Tao, Sam Phaya and Wat Mae in Block S1"

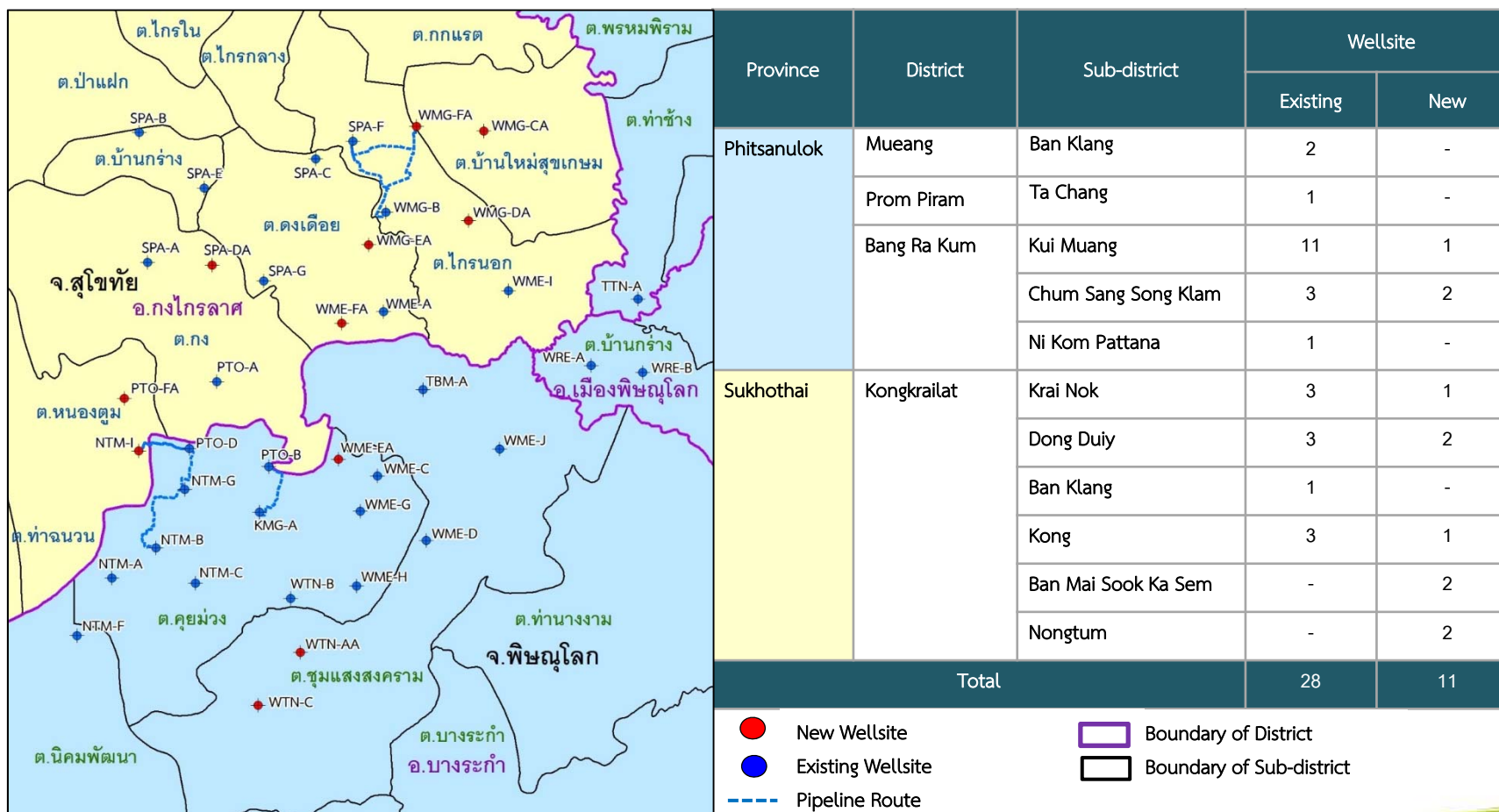
Project Description



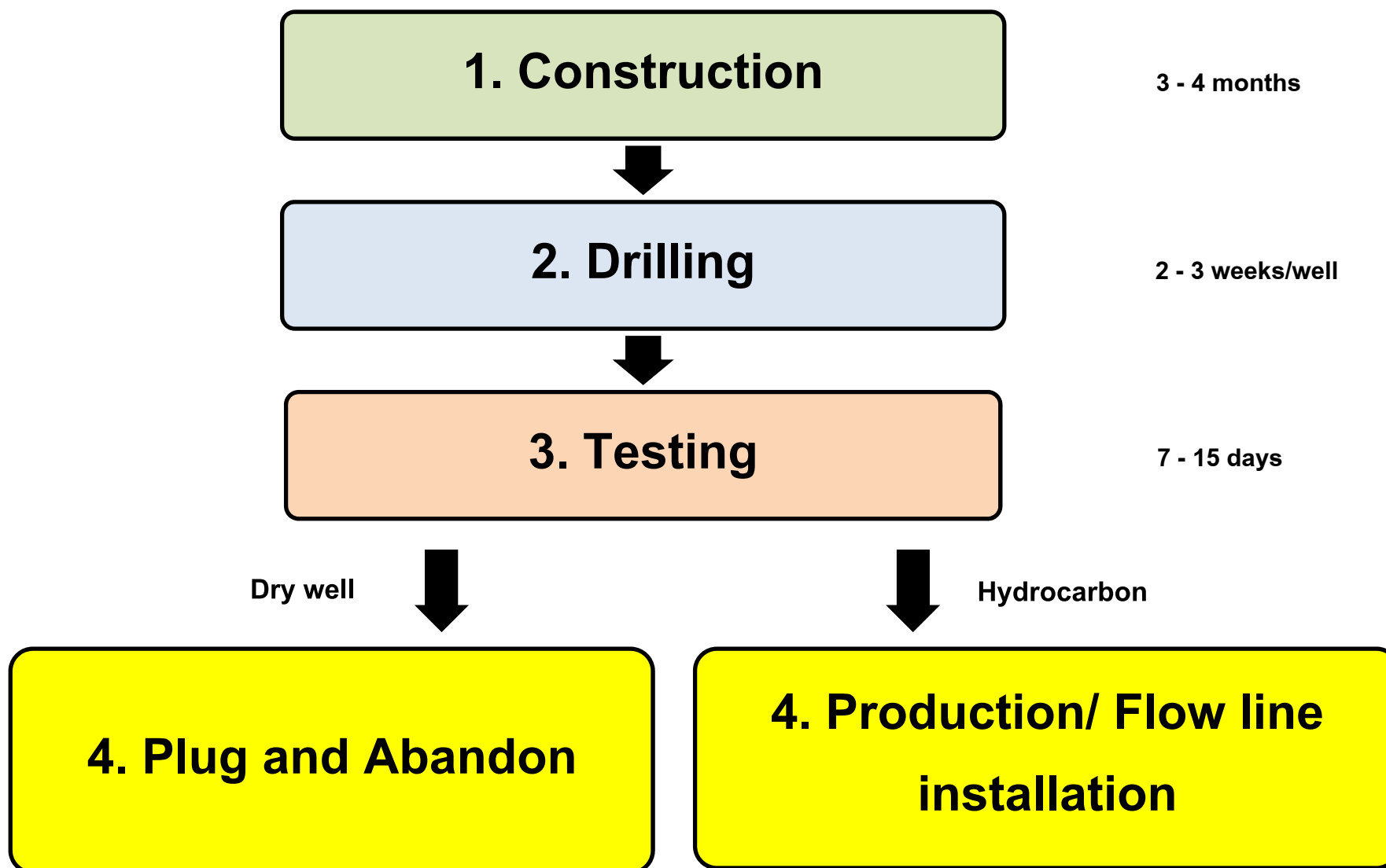
Project Description

Consist of:

- Construction, drilling, well testing and MPF production (39 well sites)
- Flow line installation and production(6 routes)



Project Description



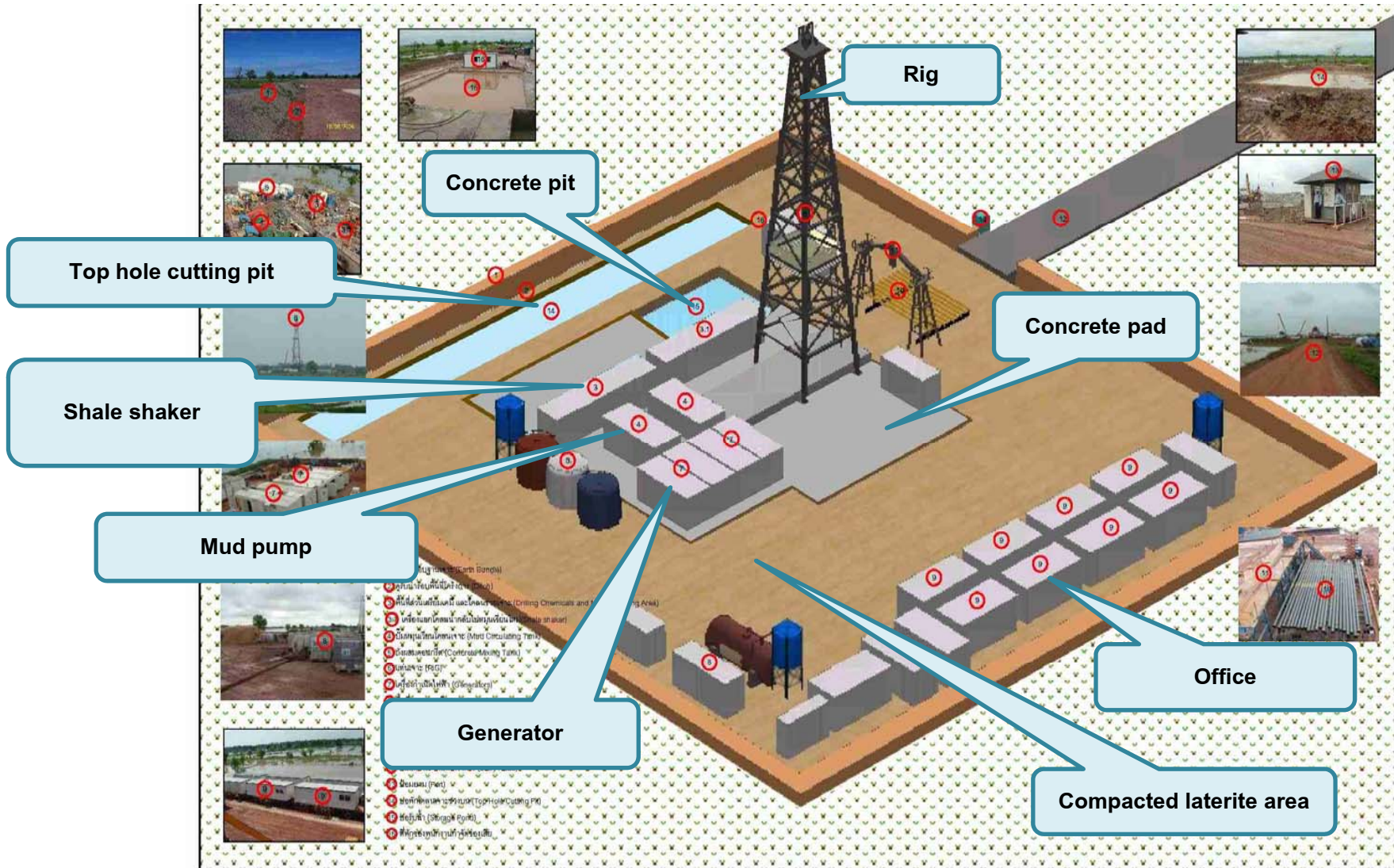
Construction Phase



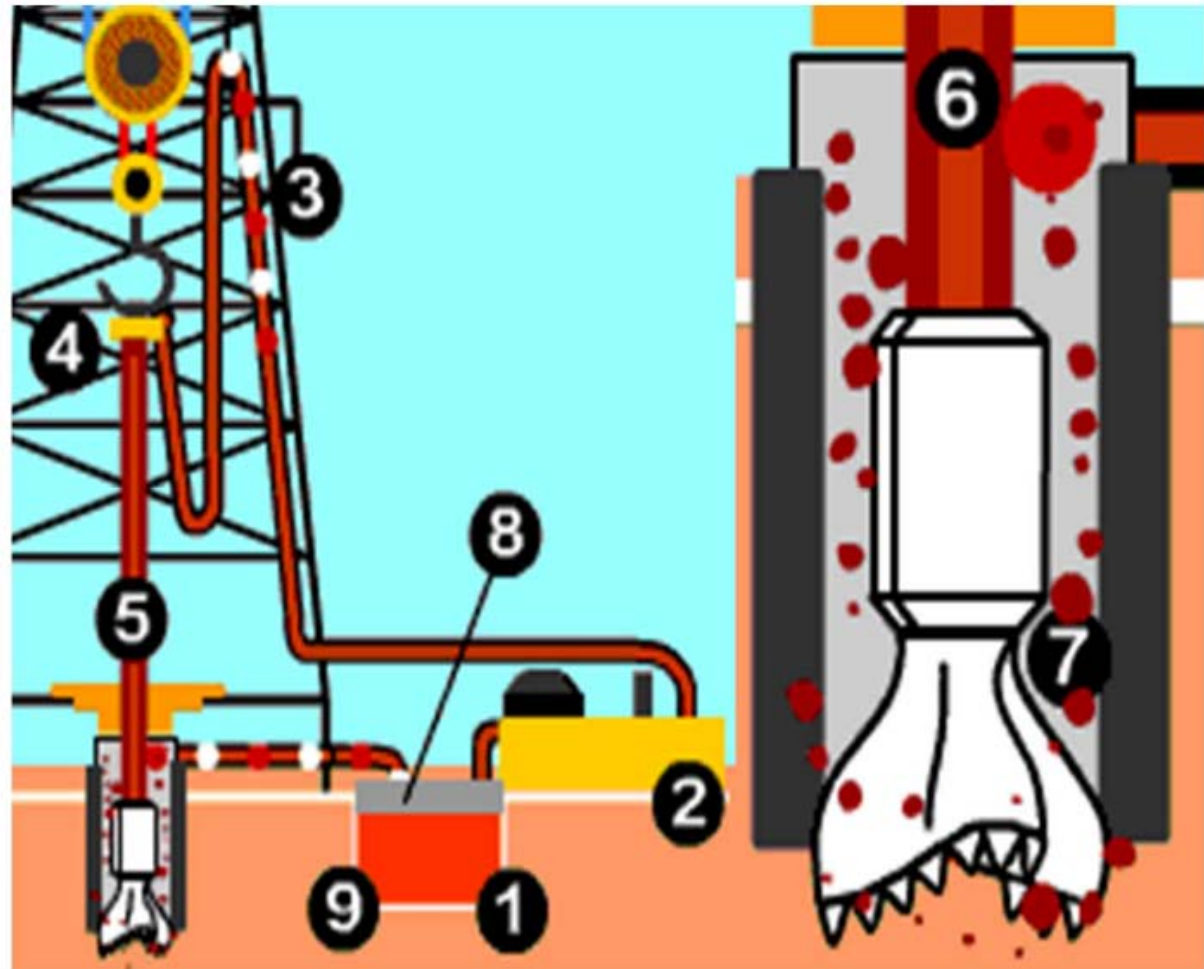
- Well site area is approximately 30 rais (150 meters width and 317 meters length)
- Access road is 7-10 meters width
- Well site is compacted with soil and laterite at 0.5 meters height over the highest flooding level



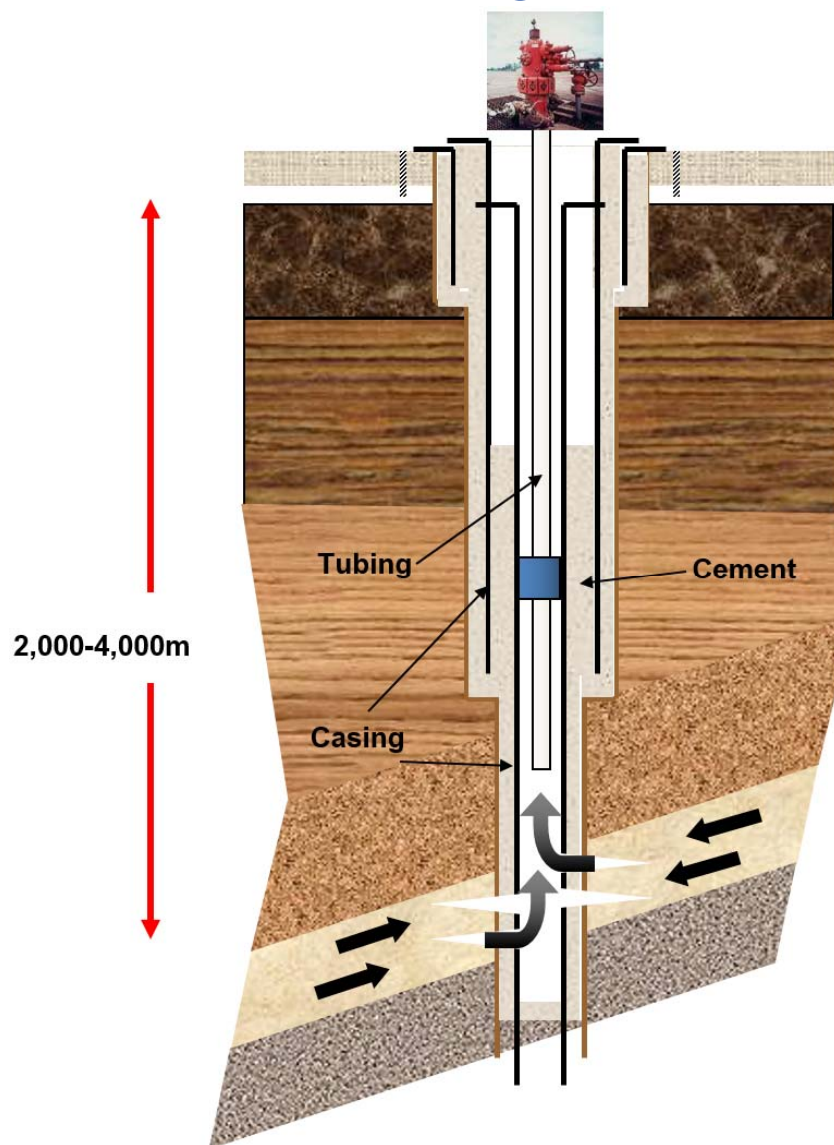
Drilling Phase



Drilling Phase



Drilling Phase



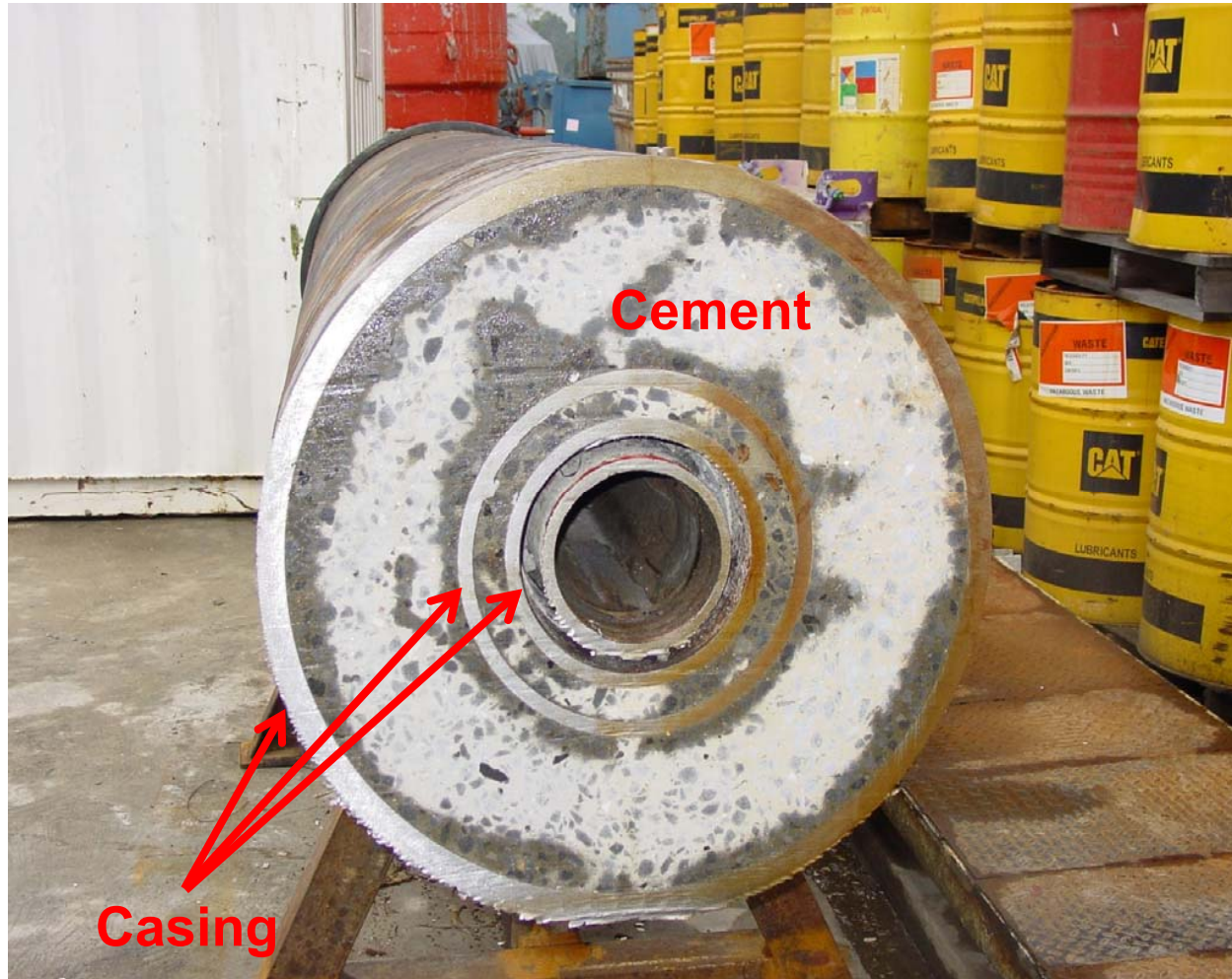
Well structure

1. Well design
2. Install conductor pipe
3. Drill at top section
4. Install casing and cementing
5. Drill at intermediate section
6. Install casing and cementing
7. Drill at reservoir section
8. Install casing and cementing
9. Install tubing and packer
10. Install Christmas Tree
11. Perforation
12. Hydrocarbon flow

Drilling Phase



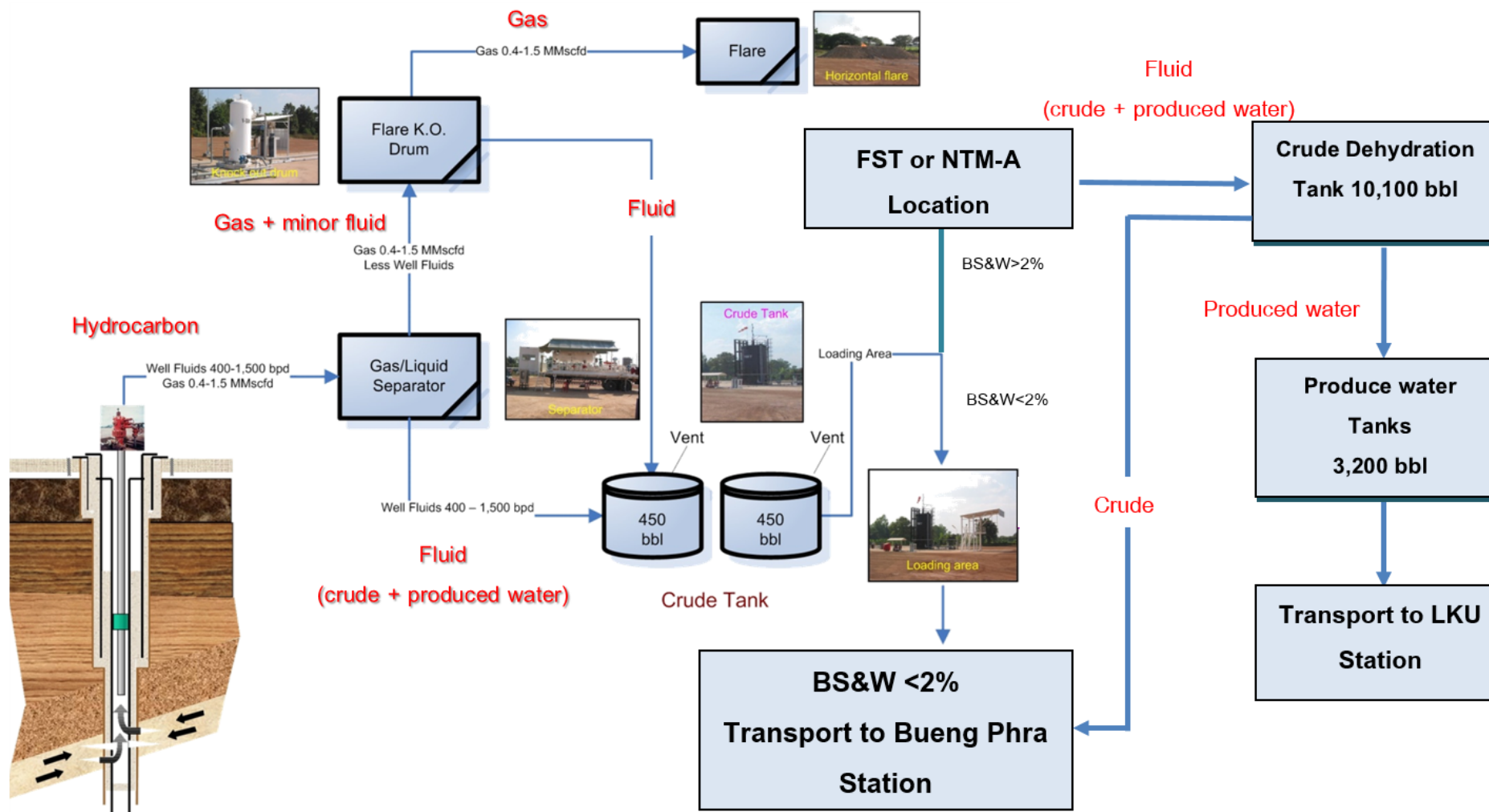
Casing



Well Testing Phase



Production Phase (MPF)



Production Phase (Flowline)

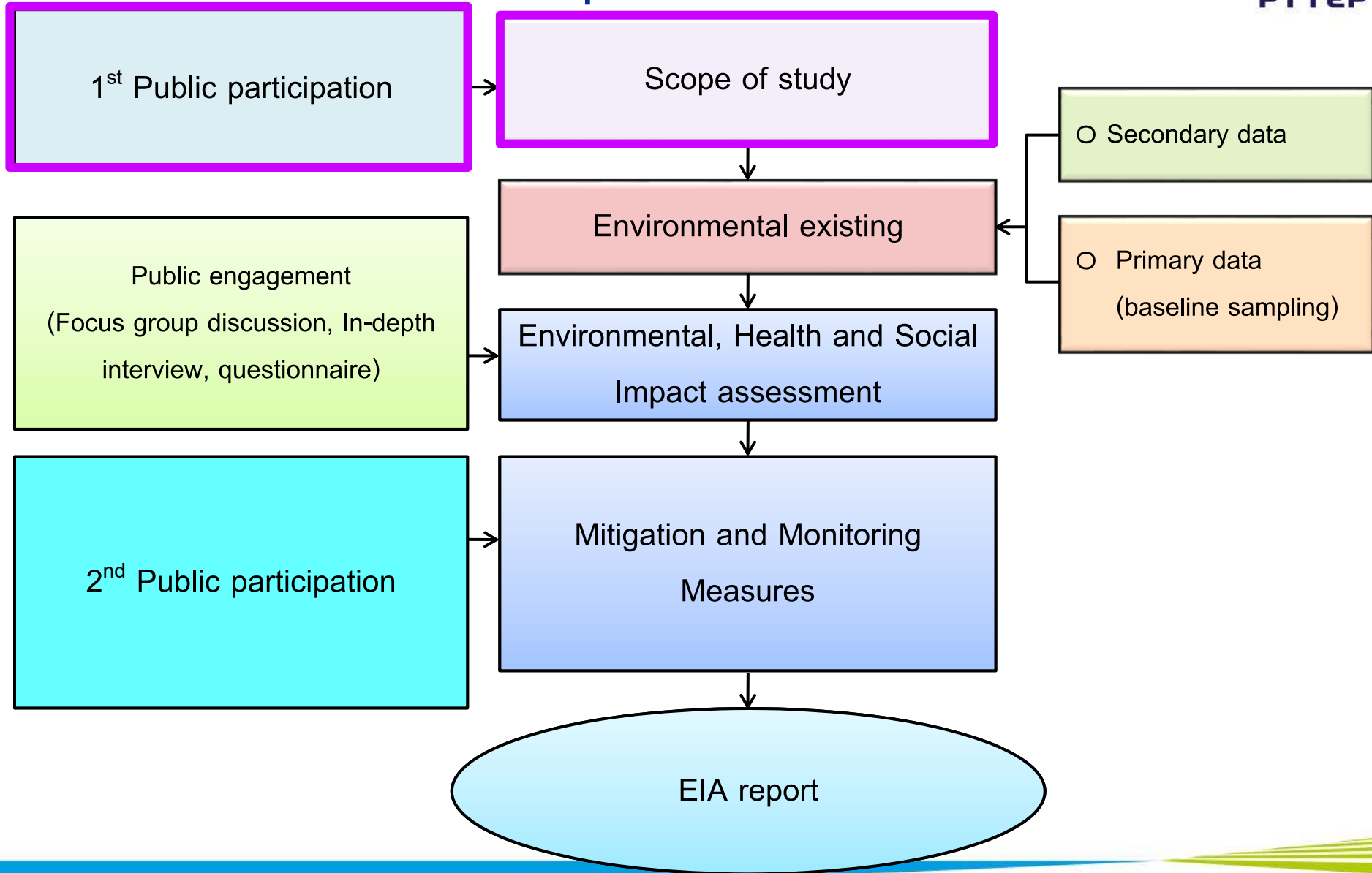
Flow line will be installed once proving the reserve is economic for long term production.



Plug and Abandon Phase



EIA Preparation Process



Scope of EIA Study

Physical

- Topography/ Climate
- Geology
- Air quality
- Noise level
- Surface water quality
- Groundwater quality
- Soil quality

Biological

- Flora & Fauna
- Aquatic

Human Use Values

- Land use
- transportation
- Infrastructure
- Water run-off/ Flooding
- Agriculture
- Waste management
- Recreation
- Tourism

Quality of Life

- Socio-Economic
- Health
- Archaeology
- Aesthetic

Public Engagement

- To present the project description for stakeholder's understanding and perception.
- Stakeholders can ask and come up with recommendation.

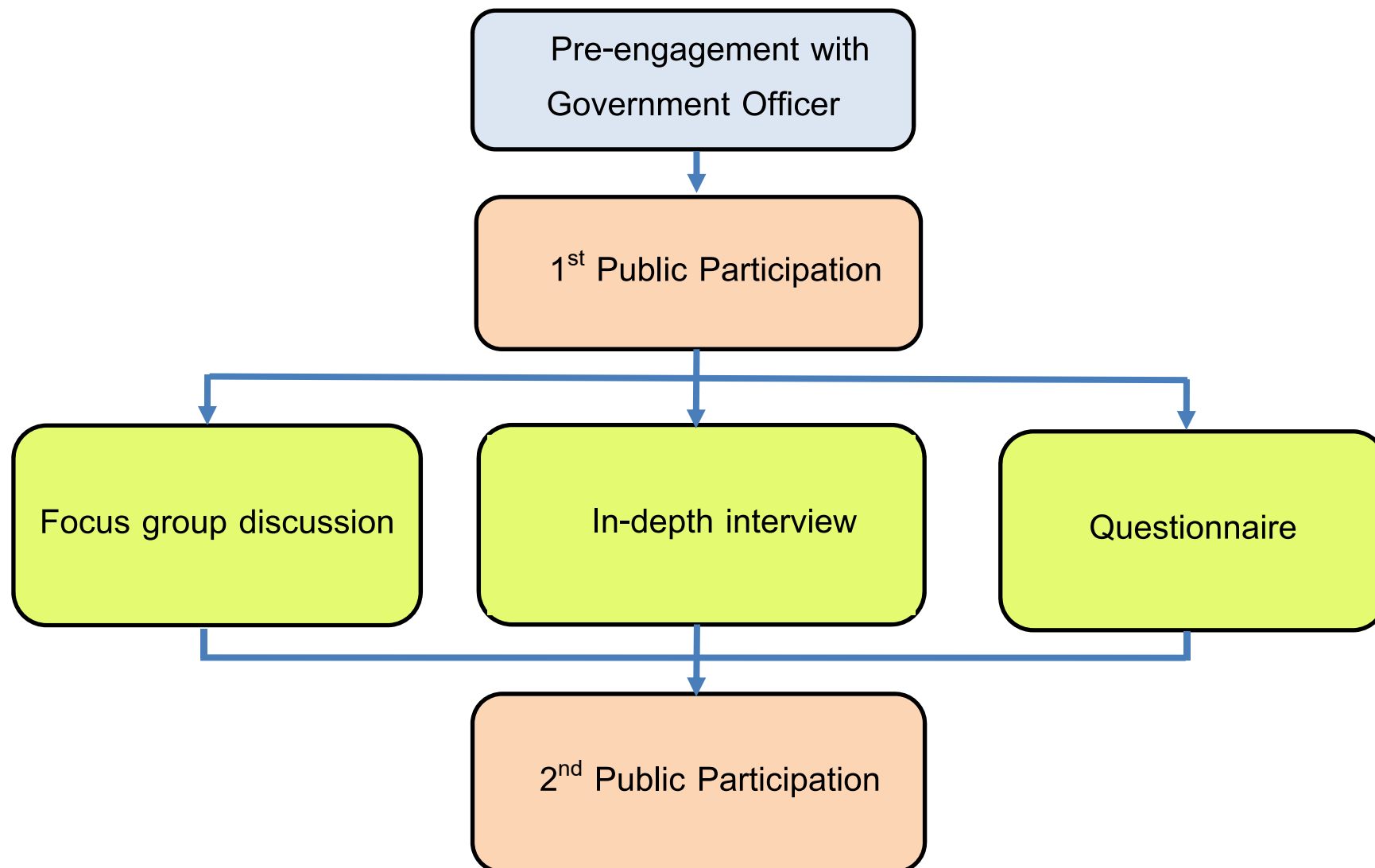


Stakeholders



Stakeholders	Description
Group 1	Direct sensitive receptors
Group 2	Project owner, Environmental consultant
Group 3	Authorities i.e. ONEP, DMF
Group 4	Government agencies
Group 5	NGO, Teacher
Group 6	Media
Group 7	People who interested in the project

Public Engagement Process



Impact Assessment



Screening



Environmental, Health and Social Aspects



Assessment



Summarize the significant of impacts

Summarize the Significant of Impacts



Major Impacts	Significant Level			
	Construction Phase	Drilling Phase	Well Testing/ Production Phase (MPF)	Production Phase (Flowline)
1. Air quality	Low	Low	Low	Low
2. Noise level	Low	Low	Low	Low
3. Light from flaring	Low	Low	Low	Low
4. Water Drainage/ Flooding	Low	Low	Low	Low
5. Surface water/ Groundwater quality	Low	Low	Low	Low
6. Transportation	Low	Low	Moderate	Low
7. Public health & Occupational health	Low	Moderate	Moderate	Low

Air quality



Major Impact	Mitigation & Monitoring measures	Construction	Drilling	Testing	MPF Production	FL Production
1) Particulate matters from construction activity 2) Exhaust gas from flaring	Mitigation Measures					
	<ul style="list-style-type: none"> Spray water on construction site and laterite road at least twice a day Truck speed limit at 30 Km/h in wellsite and community area Installation of flare knock-out drum Always check up the efficiency of equipment and vehicle as per preventive maintenance plan Support government offices or environmental NGOs or local communities for reforestation project 	✓ ✓ - ✓ -	✓ ✓ - ✓ -	✓ ✓ ✓ ✓ ✓	✓ ✓ ✓ ✓ ✓	✓ ✓ - ✓ -
	Monitoring Measures					
	<ul style="list-style-type: none"> Air quality monitoring at sensitive receptors 	✓	-	✓	✓	✓

Noise level



Major Impact	Mitigation & Monitoring measures	Construction	Drilling	Testing	MPF Production	FL Production
1) Noise level increasing from construction activity	Mitigation Measures <ul style="list-style-type: none"> • Operate in normal working hour only (08.00-17.00 hrs.) • Always check up the efficiency of equipment and vehicle as per preventive maintenance plan 	✓	✓	✓	✓	✓
		✓	✓	✓	✓	✓
2) Noise level increasing from drilling activity	<ul style="list-style-type: none"> • Repair machine/equipment for noise reduction • In case of noise complaint, complained site shall immediately stop operation then hurry up for investigation and correction 	✓	✓	✓	✓	✓
		✓	✓	✓	✓	✓
	Monitoring Measures <ul style="list-style-type: none"> • Noise level monitoring at sensitive receptors 	✓	✓	✓	✓	✓

Light from Flaring



Major Impact	Mitigation & Monitoring measures	Construction	Drilling	Testing	MPF Production	FL Production
Light from flaring impacts to plant photosynthesize and damages to agricultural product	Mitigation Measures <ul style="list-style-type: none"> • Install horizontal flare system surrounding with 2 m height bund and 2 m height steel sheet barrier on the top of bund • Install water spray equipment and/or air blower at the horizontal flare stack • Fair compensation if proving the damage to agricultural is caused from flaring 	-	-	✓	✓	-
	Monitoring Measures <ul style="list-style-type: none"> • Not applicable 	-	-	-	-	-

Water Drainage/Flooding



Major Impact	Mitigation & Monitoring measures	Construction	Drilling	Testing	MPF Production	FL Production
Construction of wellsite and access road is obstructed water drainage and caused flooding	Mitigation Measures <ul style="list-style-type: none"> • Avoid the wellsite and access road construction where blocking the water drainage • Discuss with land owner to agree on location of pipe convert. 	✓	-	-	-	-
	Monitoring Measures <ul style="list-style-type: none"> • Not applicable 	-	-	-	-	-

Surface water/ Groundwater quality



Major Impact	Mitigation & Monitoring measures	Construction	Drilling	Testing	MPF Production	FL Production
Improper of cuttings and waste management may be contaminated to surface water and groundwater	Mitigation Measures <ul style="list-style-type: none"> • Discharge of used lube oil or waste to water is prohibited • Strictly comply with Chemical Management Standard • Potentially contaminated area shall be paved by concrete pad and surrounding with drainage system into concrete pit • Top hole cuttings can be reused or landfilled within wellsite • Bottom hole cuttings shall be disposed by incineration at legally cement kiln 	✓	✓	✓	✓	✓
	Monitoring Measures <ul style="list-style-type: none"> • Surface water quality at sensitive water sources 	-	✓	-	✓	✓

Transportation



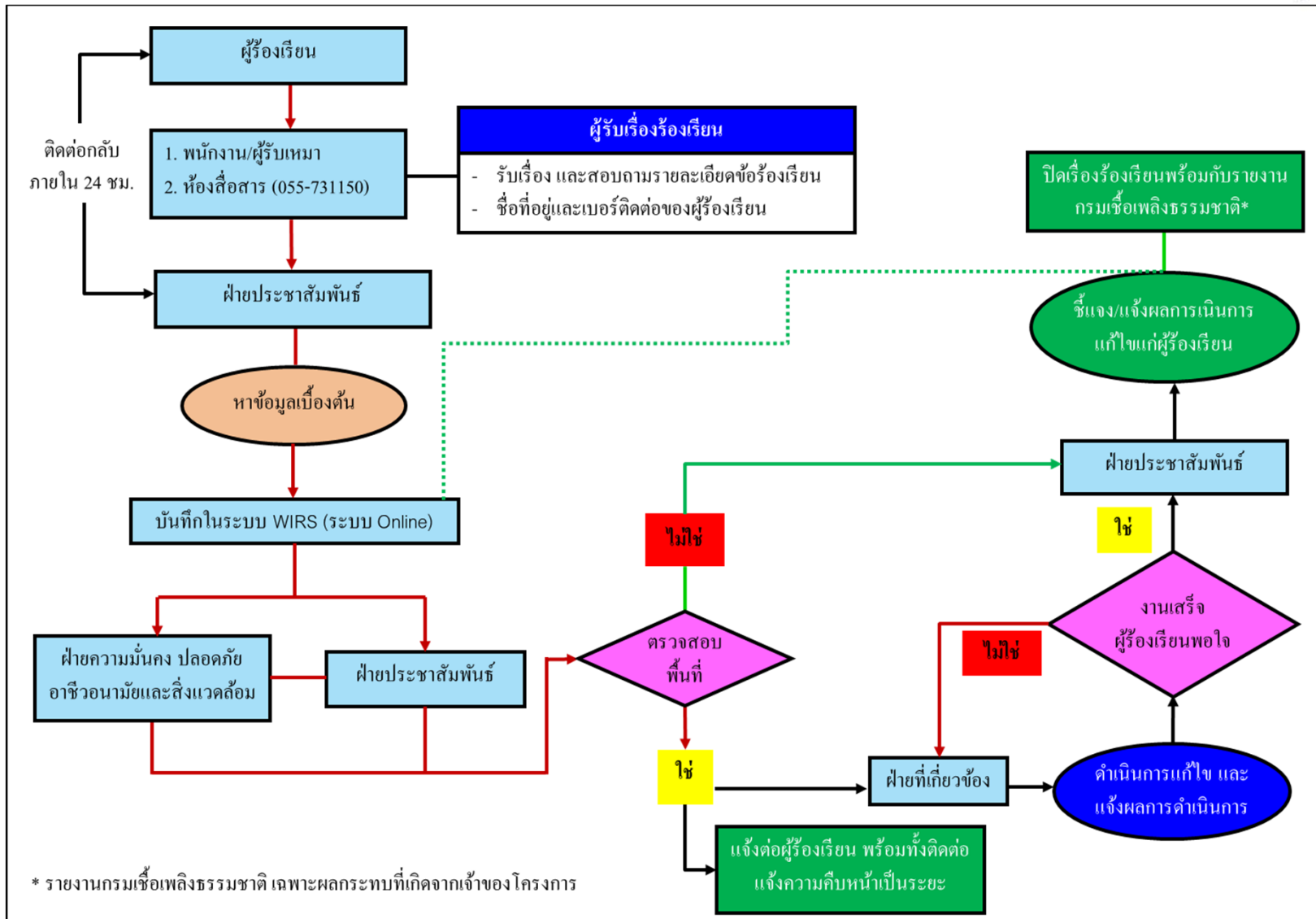
Major Impact	Mitigation & Monitoring measures	Construction	Drilling	Testing	MPF Production	FL Production
Road traffic, accident from transportation and road damage	Mitigation Measures <ul style="list-style-type: none"> • Avoid transportation of heavy equipment during peak time • Limit the transportation weight not over than the regulation of Department of Land transport • Install clearly caution sign and traffic light in the project area • Install GPS system on crude truck • Defensive driving training to all crude truck driver and refresh twice a year 	✓	✓	✓	✓	✓
	Monitoring Measures <ul style="list-style-type: none"> • Recording incident/accident to pipe routes 	-	-	-	-	✓

Public Health & Occupational Health



Major Impact	Mitigation & Monitoring measures	Construction	Drilling	Testing	MPF Production	FL Production
Unsafe acts and unsafe conditions may be caused of incident /accident to operator and people in local communities	Mitigation Measures <ul style="list-style-type: none"> • Provide fire fighting equipment and emergency response plan, on site. Emergency drill shall be conducted annually. • All operation shall strictly comply with the PTTEP SSHE Management System • Provide good conditions in workplace as usual • Provide health service to on site operator including <ul style="list-style-type: none"> ➢ First aid kits ➢ Coordinate with nearby hospital in case of medical evacuation 	✓	✓	✓	✓	✓
	Monitoring Measures <ul style="list-style-type: none"> • Risk-based health check up • Incident/accident recording and investigation 	✓	✓	✓	✓	✓

Complaint Management



Corporate Social Responsibilities



การสนับสนุนทุนการศึกษา



โครงการศูนย์หัตถกรรม
ดอกไม้ประดิษฐ์จากผ้าใยบัว



โครงการฟาร์มขนาดเล็ก



การรับนักศึกษาในพื้นที่ฝึกงาน
ที่สถานีผลิตลานกระบือ



โครงการค่ายวิทยาศาสตร์



การประชุมในโครงการ
ปตท.สผ.พบชุมชน

Sustainability Projects



โครงการผลิตไฟฟ้า
จากก๊าซธรรมชาติเหลือทิ้ง



15 กันยายน 2551 พลโทหญิง ชูณภิมย์ ลิปคพิศลภ
รัฐมนตรีว่าการกระทรวงพลังงานเป็นประธานในพิธีเปิดศูนย์
แปรรูปผลผลิตการเกษตรตำบลหนองตุ้ม



12 ธันวาคม 2551 นายแพทย์จรรณรัตน์ สาธัญกุล
รัฐมนตรีว่าการกระทรวงพลังงาน ร่วมเป็นสักขีพยานในพิธี
ลงนามสัญญาซื้อขายก๊าซธรรมชาติ ระหว่างปตท.สผ. กับ
สหกรณ์แปรรูปกล้วยตำบลหนองตุ้ม จำกัด

โครงการก๊าซธรรมชาติเพื่อเกษตรกรชุมชน
และสิ่งแวดล้อม บ้านหนองตุ้ม



โครงการปตท.สผ. ปลูกต้นไม้ในใจคน
ณ เขตรักษาพันธุ์สัตว์ป่าซับลังกา
ปี พ.ศ. ๒๕๕๕-๕๖
ดำเนินการปลูกโดย
บริษัท ปตท.สำรวจและผลิตปิโตรเลียม จำกัด (มหาชน)
กรมอุทยานแห่งชาติ สัตว์ป่า และพันธุ์พืช กระทรวงทรัพยากรธรรมชาติและสิ่งแวดล้อม



โครงการ ปตท.สผ. ปลูกต้นไม้ในใจคน
ณ เขตรักษาพันธุ์สัตว์ป่าซับลังกา จังหวัดลพบุรี
ปี พ.ศ. 2551 เนื้อที่ 500 ไร่

โครงการปลูกป่า ปตท.สผ.

ช่องทางการติดต่อ



ทีมงานชุมชนสัมพันธ์ ปตท.สผ. โครงการเอส 1
โทรศัพท์ 0-5573-1150 โทรสาร 0-5573-1151